



MRI SCAN

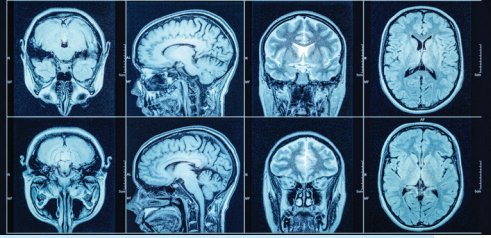
Aster
HOSPITAL

We'll Treat You Well



Digital Version

WHAT IS MRI SCAN?



A high precision and non-invasive method to diagnose and treat medical conditions, MRI or Magnetic Resonance Imaging uses a magnetic field and radio wave pulses to capture detailed pictures of organs, soft tissues, bones or internal body structures for that matter. It enables your doctor to make the accurate diagnosis and provide optimal treatment.

WHAT IS CONTRAST MATERIAL?

In certain cases, the radiologist may recommend you receive a special dye called contrast material to highlight the areas of body being examined.

The contrast material can help emphasize solid organ and blood vessels or other structures.

Intravenous contrast is a colourless liquid given by injecting usually into an arm vein. You may experience a feeling of warmth during the injection and a metallic taste in your mouth. The contrast material is excreted from the body through the kidneys. So, it has to be made sure that your kidneys are functioning properly - these needs checking your blood for serum creatinine value or similar.

If this result is not available already, we need to send your blood for this test before the MRI scan and only if the value is within normal range we will proceed with the study.

REACTIONS TO INJECTED CONTRAST MATERIAL

In certain cases, the contrast material can cause some reaction. Most reactions are mild and result in a rash or itchiness. In rare and exceptional instances, an allergic reaction can become serious. Tell your doctor if you've ever had a reaction to contrast material.

WHEN AN MRI IS NOT POSSIBLE



You will not be able to undergo an MRI if you have any of the following implants:

- Cardiac pacemaker
- Aneurysm clips in the head
- Cochlear (inner ear hearing aid) implants
- Metallic fragments in the body
- Certain types of heart valves (metallic valves are no longer in use though)
- Certain aortic stents
- Mechanical pumps
- Nerve stimulators
- Teeth braces

Kindly remove metallic items such as watches, credit cards, jewellery etc. before the scan.

PREPARING FOR MRI SCAN

You can eat & drink as normal except for MRCP & MRI abdomen scans.

SCANS UNDER ANESTHESIA OR SEDATION

In some patients especially children, the scan may have to be done under a sedative or a general anesthetic to keep the patient calm and still. This will need some special preparation including additional food restrictions. If your scan is planned under GA or sedation kindly follow the referring doctor's instructions also complete the PAC clearance.

WHAT CAN YOU EXPECT ON THE DAY OF THE SCAN?

Please report to the radiology reception at least 15 minutes prior to your scheduled time. If you are late or if you cannot make the appointment, please inform to use in advance.

You are likely to meet radiology nurse & a technologist who will assist you with necessary preparations, get consent form signed by you and if needed, place an intravenous cannula in one of your arm veins for injecting contrast.

Depending on which part of your body is being scanned, you may be asked to:

- Take off some or all of your clothing & wear a hospital gown
- Remove metal objects such as a belt, jewellery, dentures & eyeglasses, which might interfere with image results.

During the Scan

Our Technologist will explain in detail as to what you should do and what you should not while the scan is on.

You should lie absolutely still in the scanner, as even the slightest movement can affect the quality of the images.

The scanner will make loud buzzing, sweeping noises and there might be table movement. Do not worry; it's just capturing the images from all possible angles. You can listen to music while the

scanning is on. Our technologist will give you a pair of noise-reducing earphones.

At times, in order to get a clearer picture of the medical condition, a dye might be injected before the MRI.

Duration of The Scan

The exact duration of the scan cannot be predicted, it can last roughly between 30 to 50 minutes.

AFTER THE MRI

After the scan you can return to your normal routine. If you were given a contrast material, you may be asked to wait for a short time before leaving to ensure that you feel well after the scan. After the scan, if there are no medical restrictions, you can drink fluids and eat as normal and return to your routine activities as before.

Please note that while we will try our best to complete your scan in the allocated time slot, there may be some unforeseen delays, especially due to emergencies happening in a busy hospital.

WHAT ABOUT THE RESULT?

A radiologist interprets these images and sends a report to radiology PACS system. The result of the scan will be conveyed to you by your referring doctor after the report is made ready. We will record your images onto a DVD which can be collected from the radiology reception.



PLEASE SCAN FOR
THE LOCATION

Aster HOSPITAL

We'll Treat You Well

Mankhool, Kuwait Road, Al Mankhool - Dubai

📞 04 440 0500 🌐 asterhospitals.com 📱 📧 📺 asterhospital

DEPARTMENTS

Accident & Emergency • Anesthesiology • Cardiology • Clinical Nutrition
Dental Centre • Dermatology • ENT • General Surgery • Insurance
Internal Medicine • Laboratory Services • Neurosurgery • Ophthalmology
Obstetrics & Gynaecology • Orthopedics • Patient Affairs